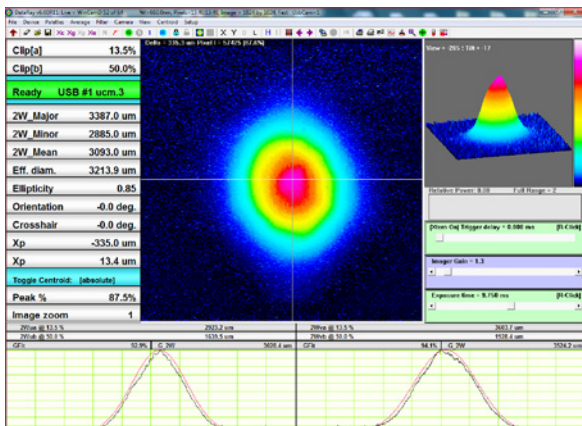
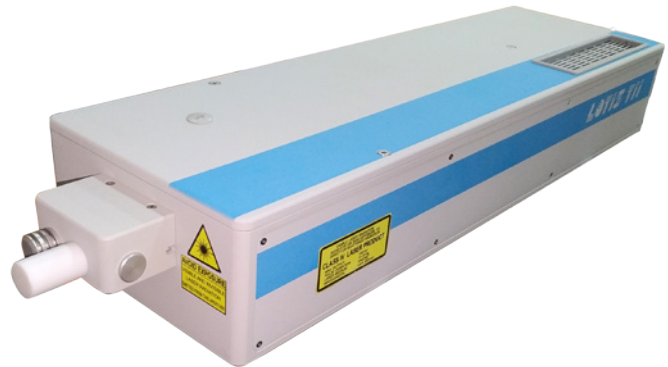


LS-2146

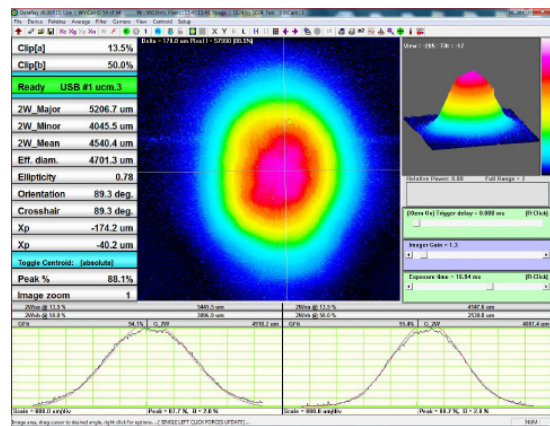
LOTIS TII introduce a new high-energy diode pumped laser. The laser has a built-in second harmonic and can be supplied with external harmonic generators (355, 266 and 213 nm).

Main features:

- Energy up to 180 mJ at 1064 nm.
- Pulse repetition rate up to 100 Hz.
- Compact laser head design.
- Built-in 1064 nm energy indicator.
- Control by the computer or external TTL signals.
- Automatic switching of the output wavelengths.
- Industrial dust-protected performance.



Typical beam profile for 1064 nm



Typical beam profile for 532 nm

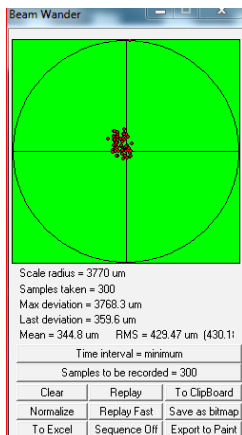
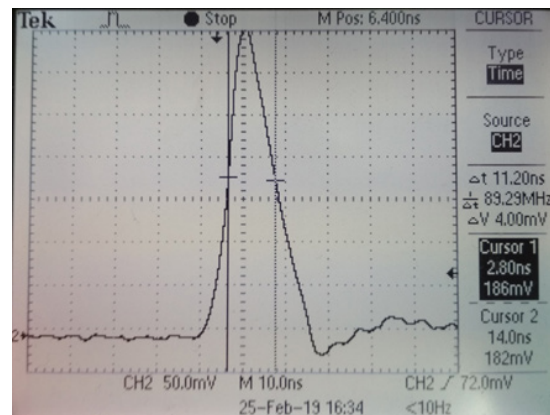


Diagramm of beam pointing stability



Pulse duration for 1064 nm

SPECIFICATIONS¹

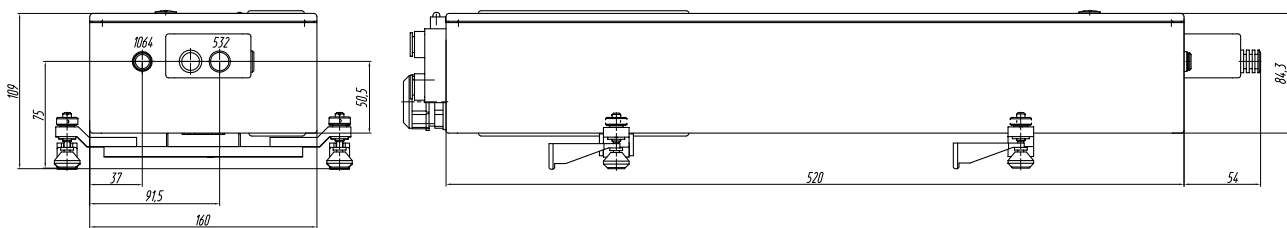
Model	LS-2146
Energy, mJ	
1064 nm	180
532 nm	100
355 nm	35/50 ²
Pulse duration (FWHM, at 1064 nm), ns	11-12
Pulse repetition rate, Hz	up to 100
Beam divergence, mrad	≤2.5
Beam diameter, mm	≤5
M ²	<6.0
Jitter ³ , ns	±1.0
Energy stability (RMS at 1064 nm), %	<0.7
Energy stability (RMS at 532 nm), %	<1.0
Long Time Energy stability (RMS at 1064 nm, during 8 hours), %	<2.0
Beam pointing stability, mrad	0.14
Size L x W x H, mm (Weight, kg)	
Laser head	574 x 160 x 109 (10.0)
Power supply	391 x 364 x 192 (14.0)
Cooling system	500 x 370 x 650 (43.0)
Remote control	105 x 175 (0.5)
Power requirements	Single phase, 200-240V, 50/60 Hz, 10 A
Consumed power, W	1500

¹ All specifications are subject to change without notice

² High energy TH option

³ With respect to external trigger of Q-switch

Laser applications: micromachining; OPO, Ti:Sapphire and dye lasers pumping; laser spectroscopy, etc.



Overall sizes of above DPSS lasers